

## HESCON Ltd. - DESIGN AND STATICS OFFICE

ARCHITECTONIC STUDIES - COMPLEX PROJECTION WORKS  
STATICS AND DYNAMICS OF BUILDINGS  
WORKSHOP DOCUMENTATION OF PREFABRICATED AND STEEL CONSTRUCTIONS

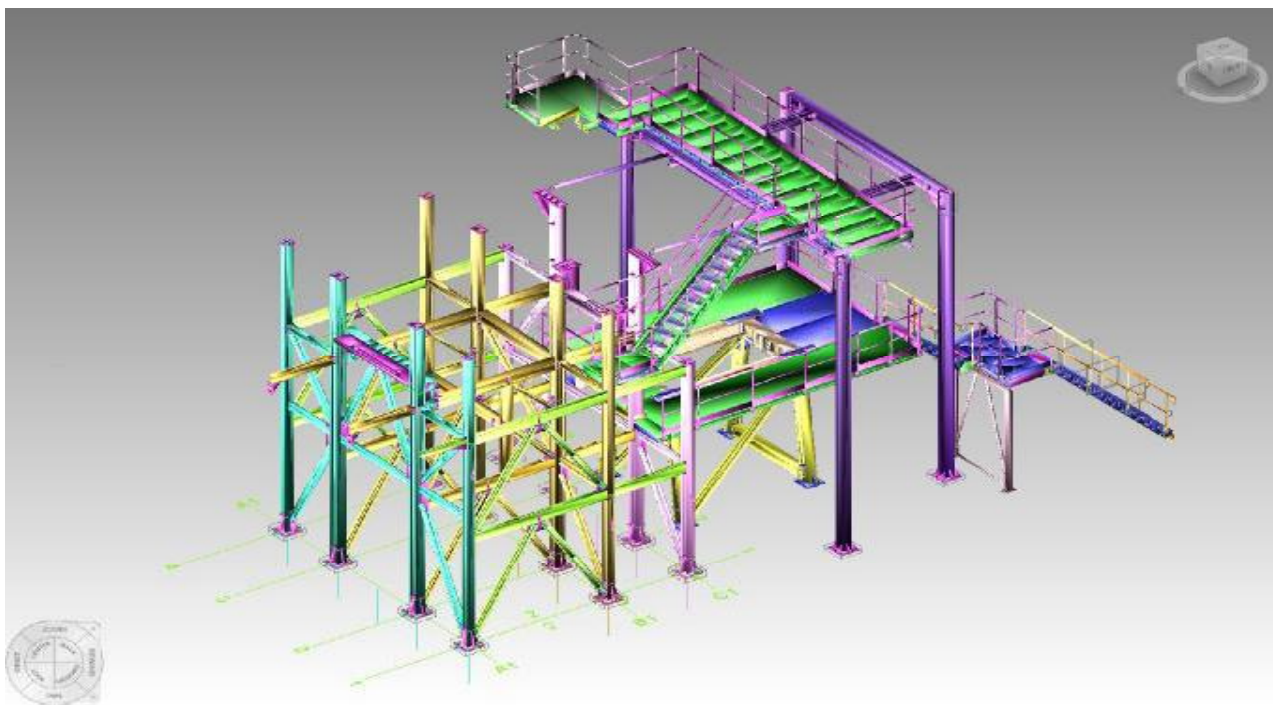
The company **HESCON s.r.o.** was established in year 2008 and we dispose of extensive experience in the area of the complex projection works from the studies to project realization. We are able to bring the supporting constructions of the buildings to the production documentation. The business core of the company is **STATICS OF THE BUILDINGS OF THE SUPPORTING CONSTRUCTIONS**. When we make projects we follow our long-term experience in this field and our engineers utilize the latest engineering software for designing the projects in 3D (Allplan BIM, Advance Steel, Tekla structures, Scia Engineer, GEO, FINE and others).

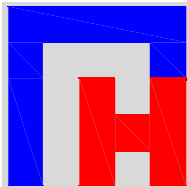
We cooperate with several authorized architects and construction engineers as well as construction companies and producers of steel and prefabricated constructions.

### OUR REFERENCES OF WORKSHOP DOCUMENTATION OF STEEL CONSTRUCTIONS

#### *METSO Minerals - Rana Gruber - NORWAY*

- o workshop dokumentation of steel structures
- o steel structures for crushed stone, dimension of the building: 15m x 10m x 8m



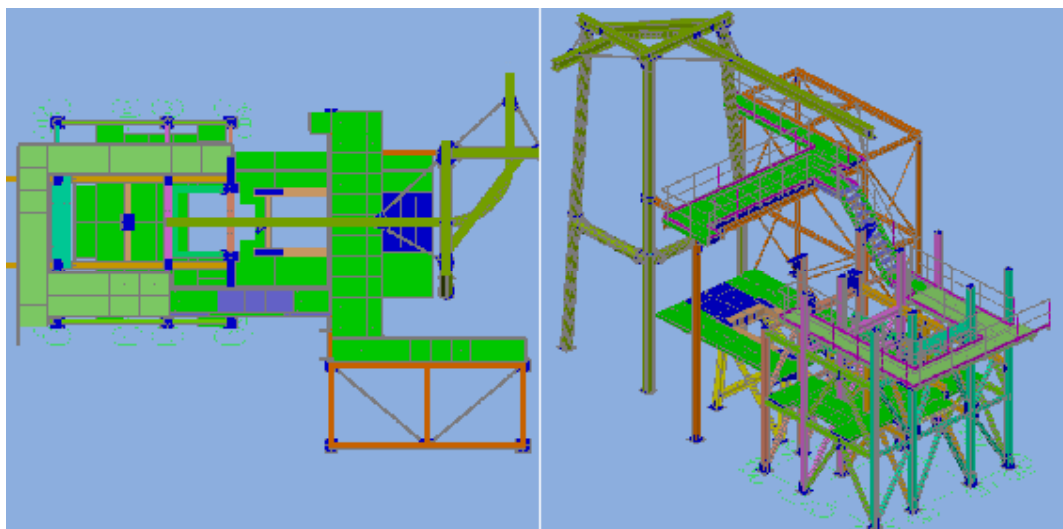
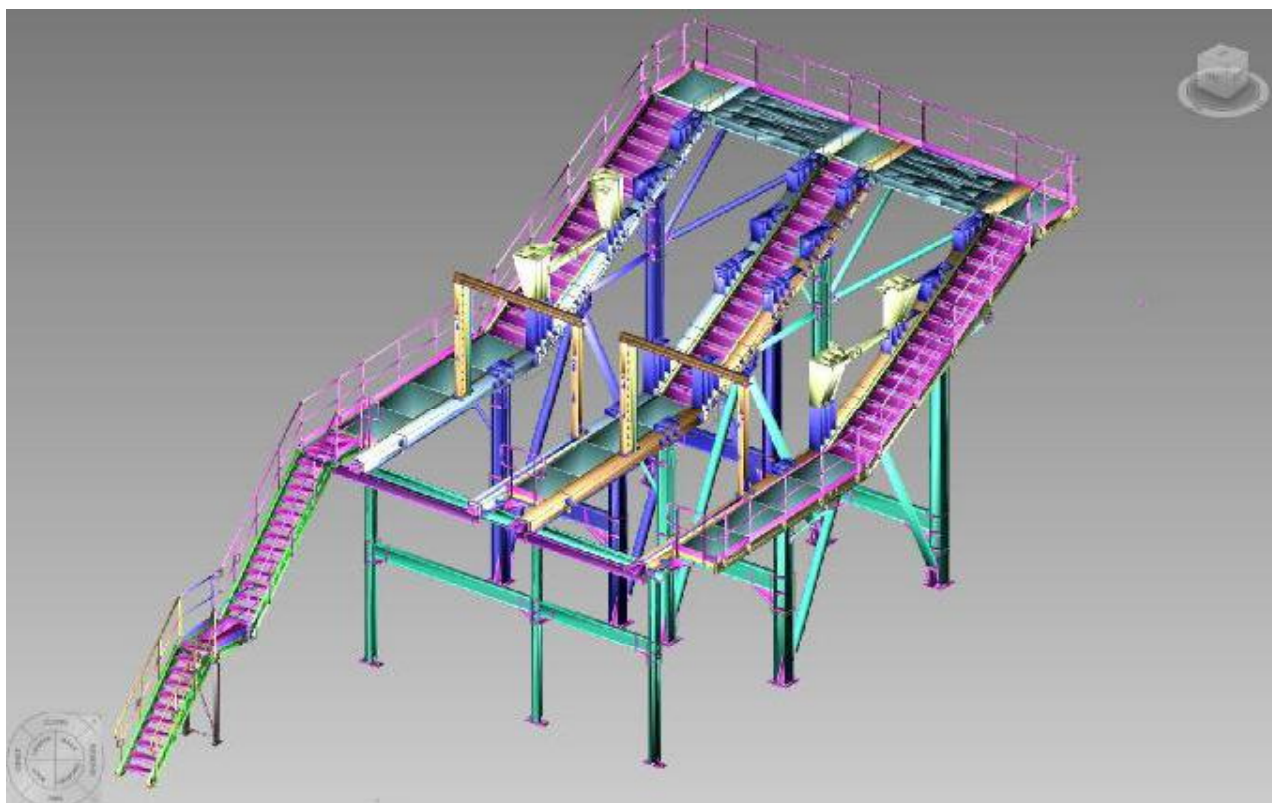


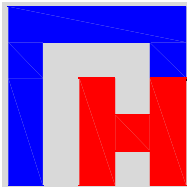
## HESCON Ltd. - DESIGN AND STATICS OFFICE

ARCHITECTONIC STUDIES - COMPLEX PROJECTION WORKS  
STATICS AND DYNAMICS OF BUILDINGS  
WORKSHOP DOCUMENTATION OF PREFABRICATED AND STEEL CONSTRUCTIONS

### METSO Minerals - Granit Opencast – BELARUS

- workshop dokumentation of steel structures
- dimension of the building: 8m x 18,6m x 14,9m



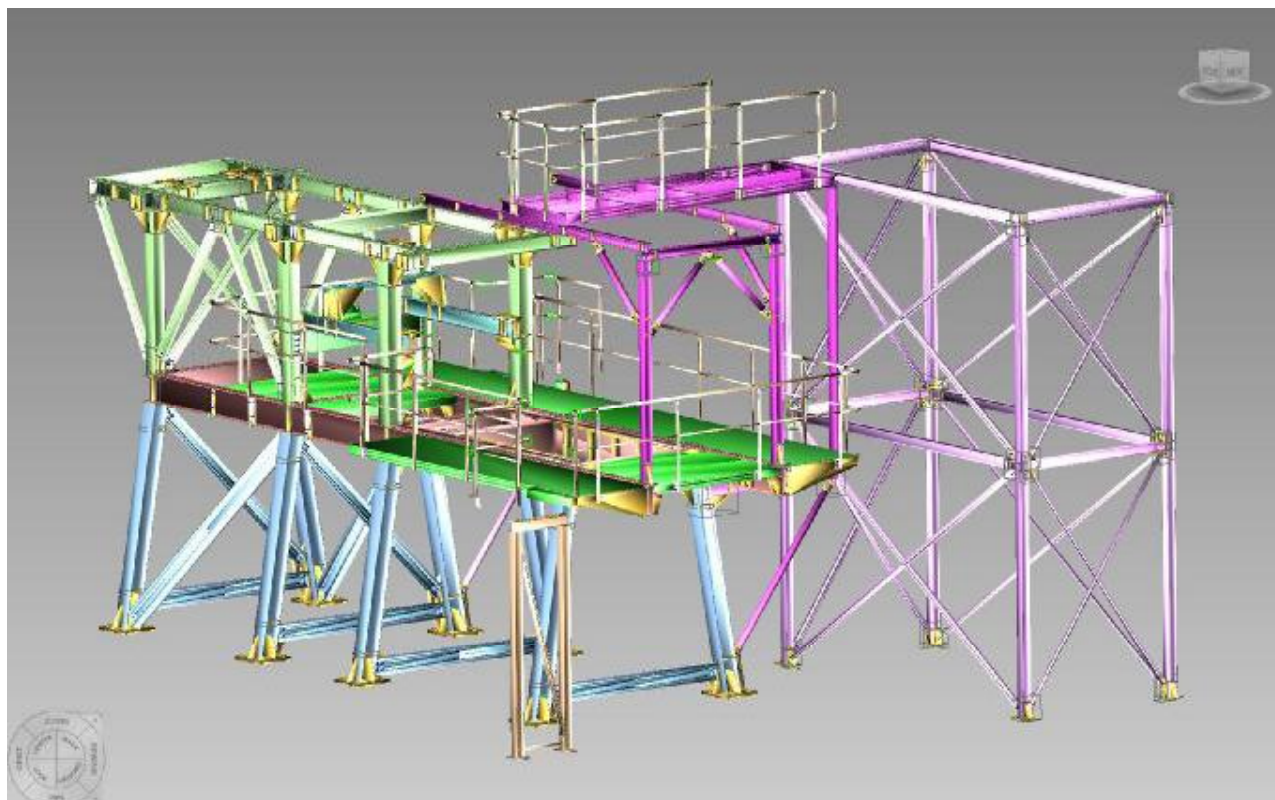


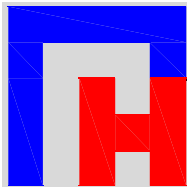
## HESCON Ltd. - DESIGN AND STATICS OFFICE

ARCHITECTONIC STUDIES - COMPLEX PROJECTION WORKS  
STATICS AND DYNAMICS OF BUILDINGS  
WORKSHOP DOCUMENTATION OF PREFABRICATED AND STEEL CONSTRUCTIONS

### METSO Minerals - ABK KAZACHSTAN

- workshop dokumentation of technological steel structures
- dismesion od the building: 5,7m x 9,6m; high: 12,2m.



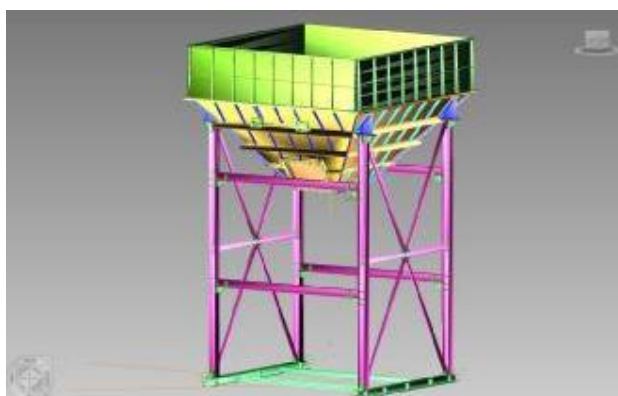
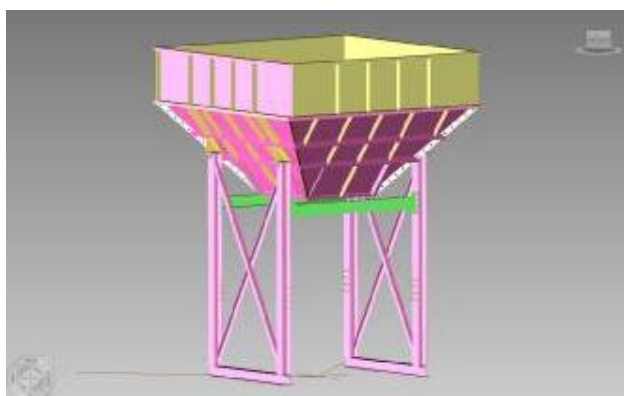
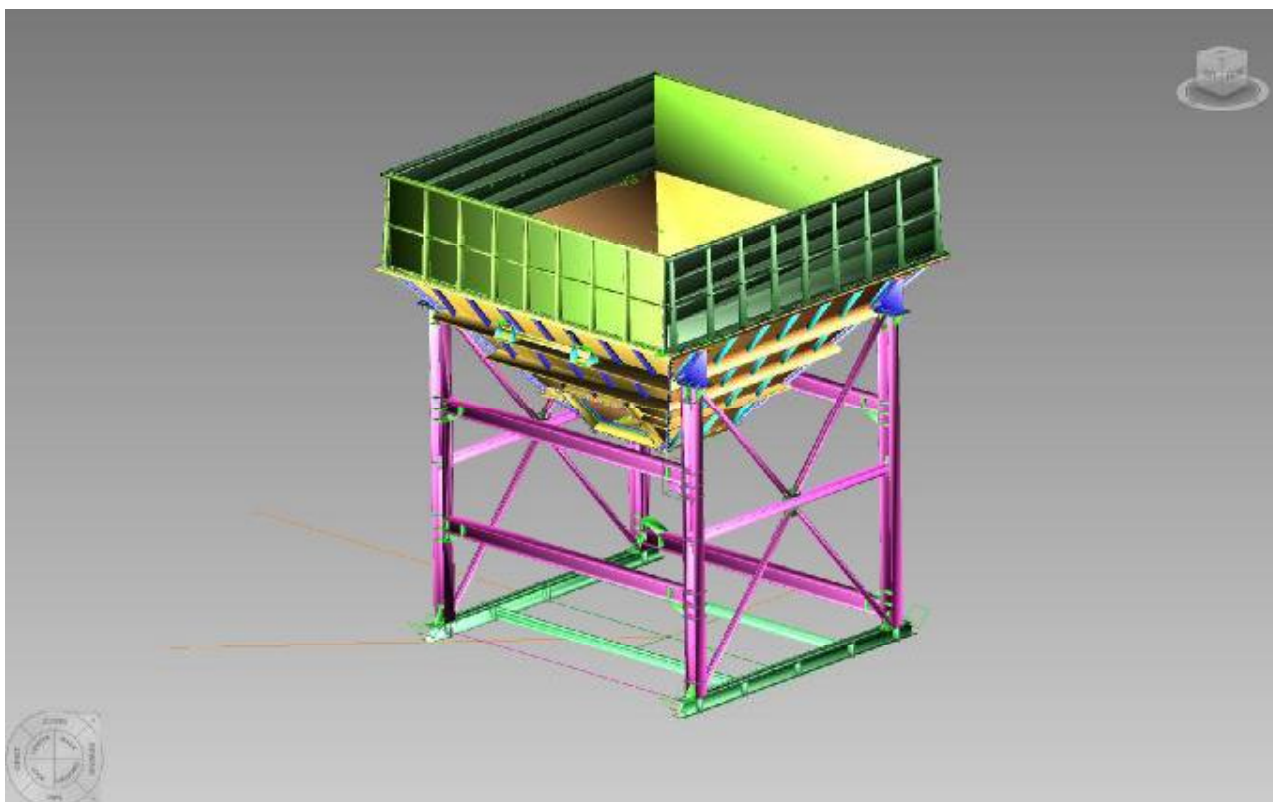


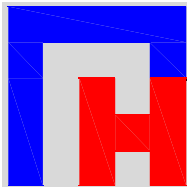
## HESCON Ltd. - DESIGN AND STATICS OFFICE

ARCHITECTONIC STUDIES - COMPLEX PROJECTION WORKS  
STATICS AND DYNAMICS OF BUILDINGS  
WORKSHOP DOCUMENTATION OF PREFABRICATED AND STEEL CONSTRUCTIONS

### METSO Minerals – Volgotransstroy – UKRAINE

- workshop dokumentation of technological steel structures
- quantity of steel: 9 t



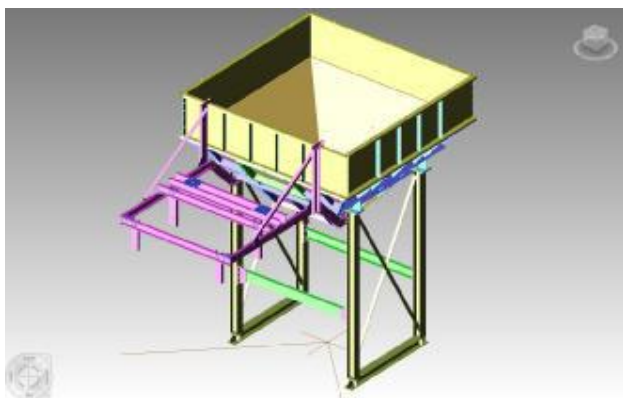
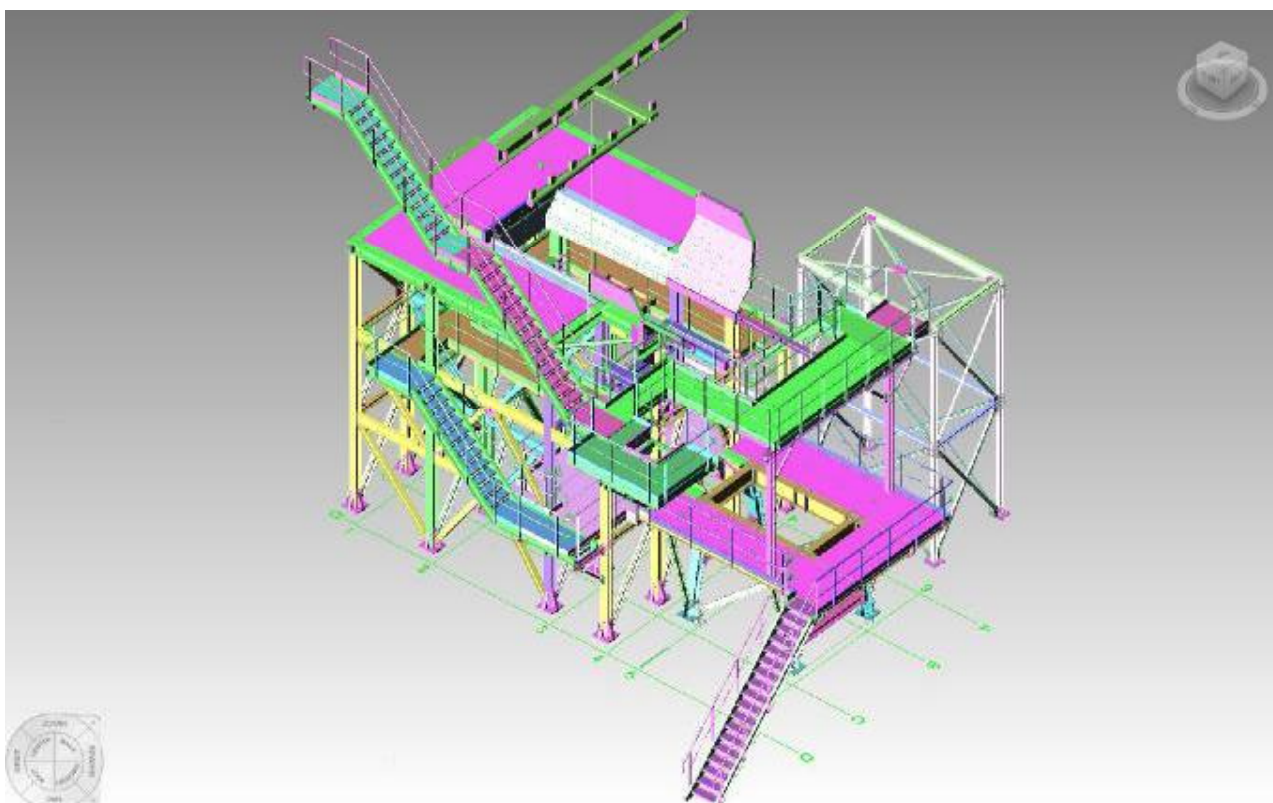


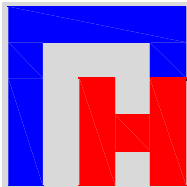
## HESCON Ltd. - DESIGN AND STATICS OFFICE

ARCHITECTONIC STUDIES - COMPLEX PROJECTION WORKS  
STATICS AND DYNAMICS OF BUILDINGS  
WORKSHOP DOCUMENTATION OF PREFABRICATED AND STEEL CONSTRUCTIONS

### METSO Minerals – Shemur

- o workshop documentation of steel structures
- o dimension of the building: 7,3m x 8,3m x 14,5m



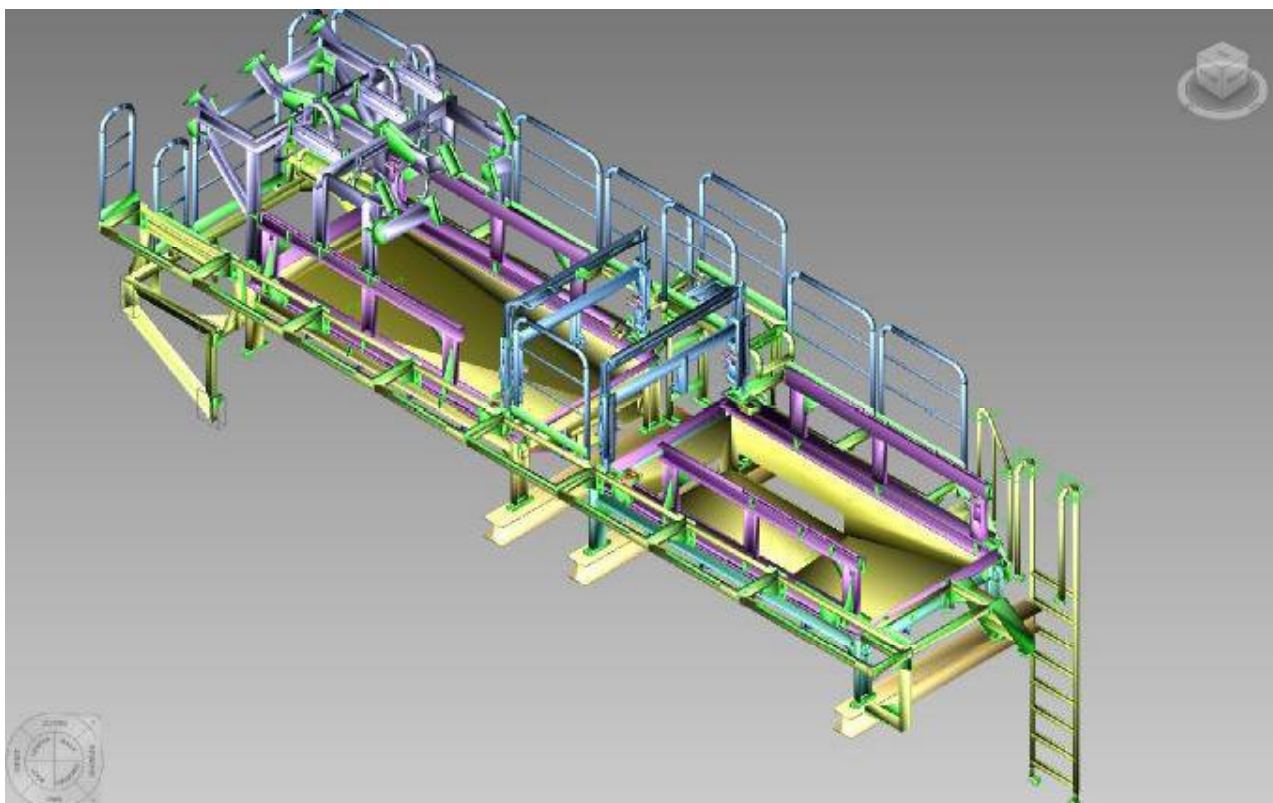


## HESCON Ltd. - DESIGN AND STATICS OFFICE

ARCHITECTONIC STUDIES - COMPLEX PROJECTION WORKS  
STATICS AND DYNAMICS OF BUILDINGS  
WORKSHOP DOCUMENTATION OF PREFABRICATED AND STEEL CONSTRUCTIONS

### Structures of TBM - HERRENKTNIGHT – GERMANY

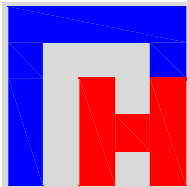
- workshop dokumentation of technological steel structures
- realization project
- dimension of building: 8,8m x 2,6m x 2,4m



### METSO Minerals – Veľký Grob – SLOVAKIA

- the project for building permission
- static calculations



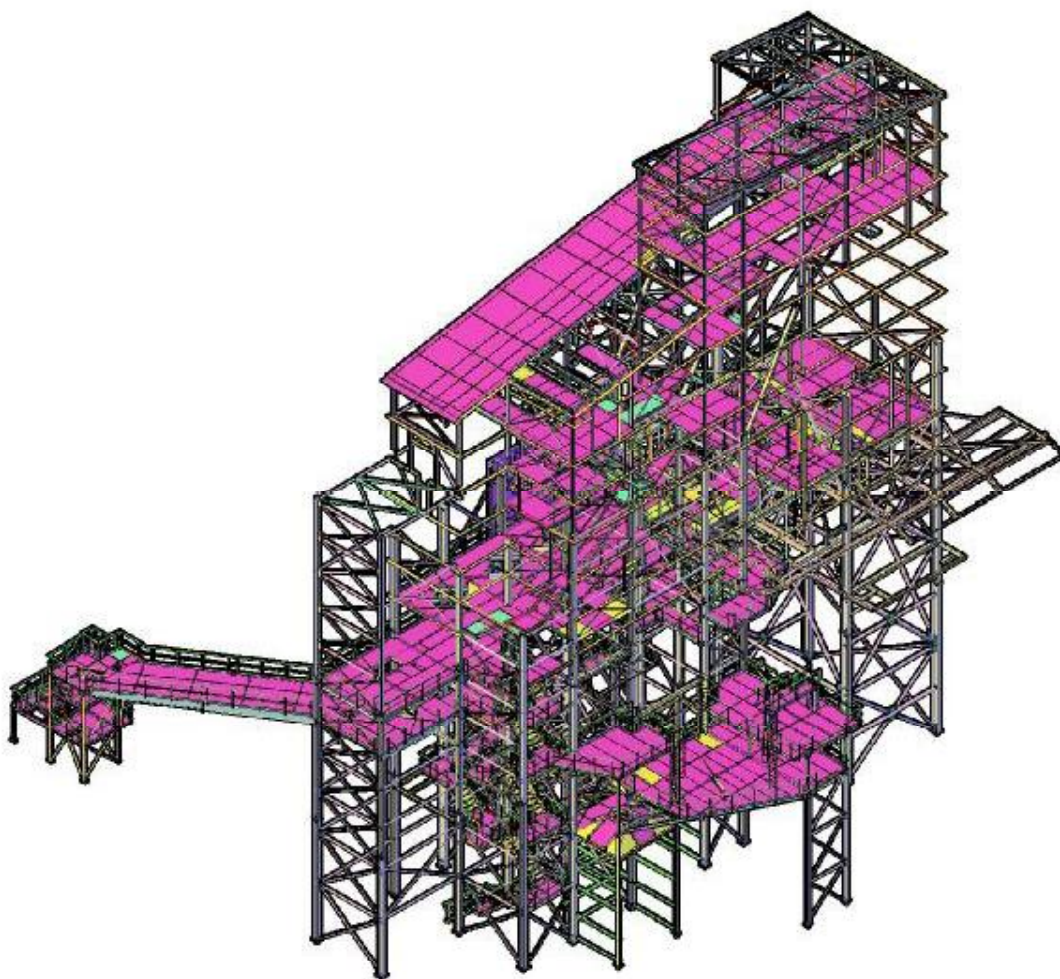


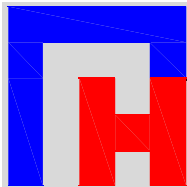
## HESCON Ltd. - DESIGN AND STATICS OFFICE

ARCHITECTONIC STUDIES - COMPLEX PROJECTION WORKS  
STATICS AND DYNAMICS OF BUILDINGS  
WORKSHOP DOCUMENTATION OF PREFABRICATED AND STEEL CONSTRUCTIONS

### QATAR STEEL - Electric melting plant

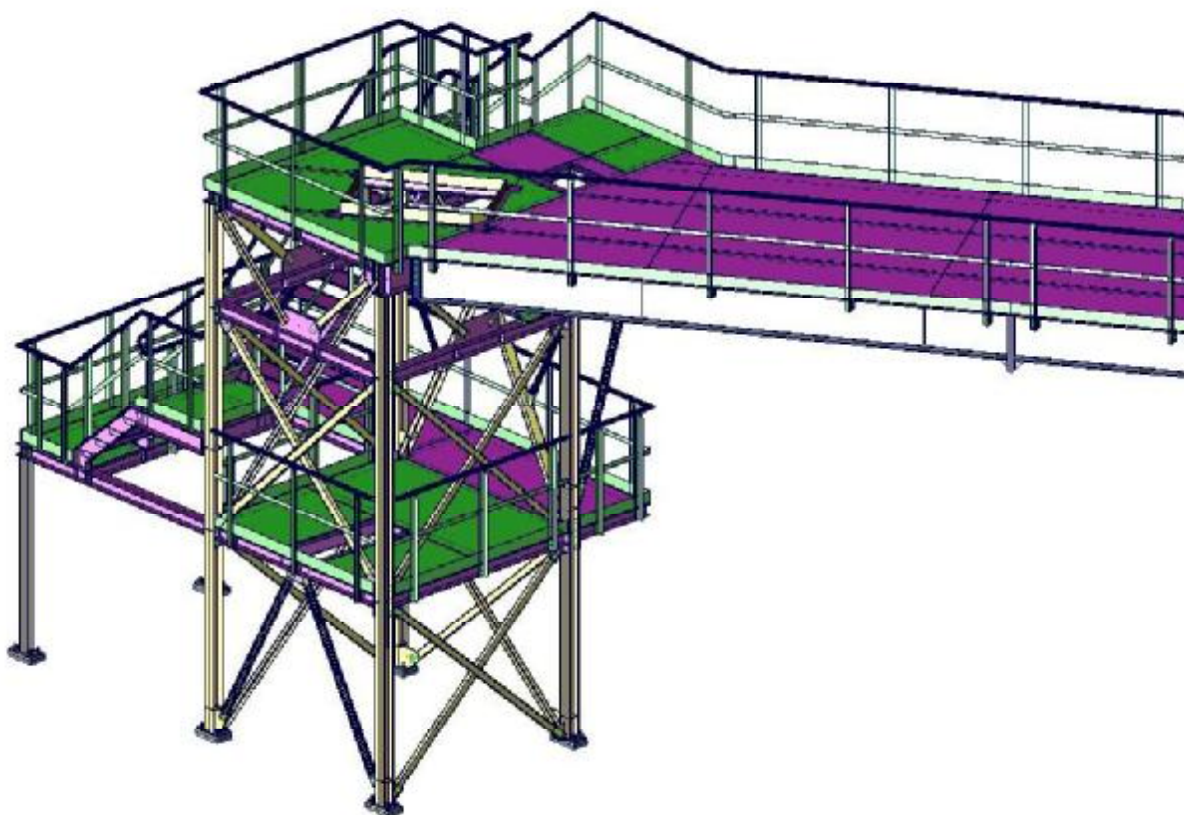
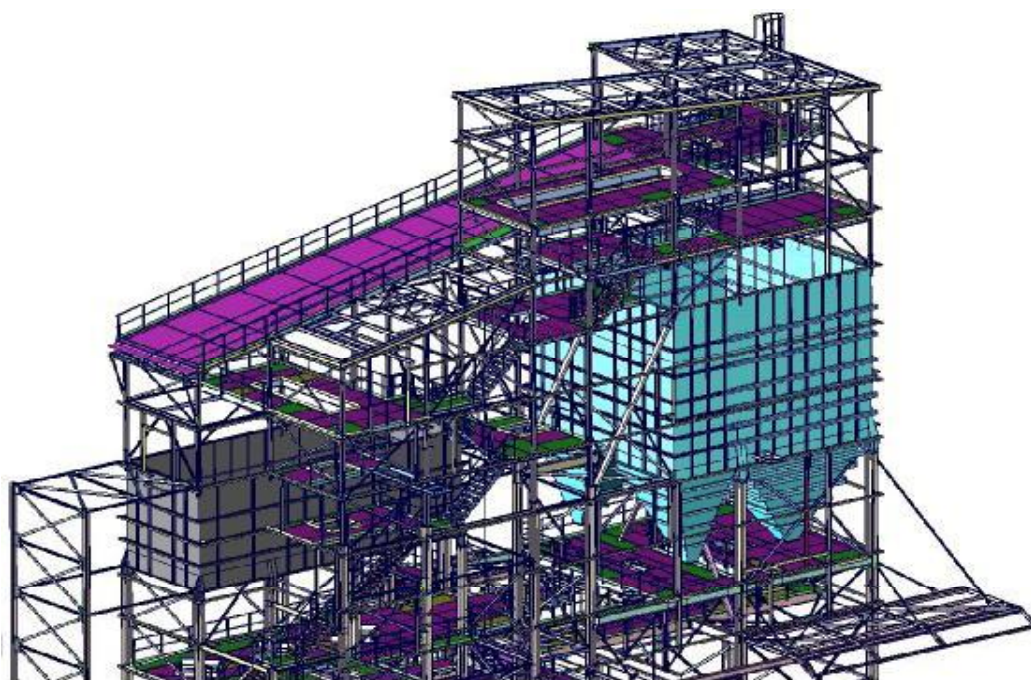
- workshop dokumentation of technological steel structures
- quantity of steel: 550 t

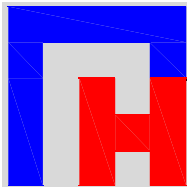




# HESCON Ltd. - DESIGN AND STATICS OFFICE

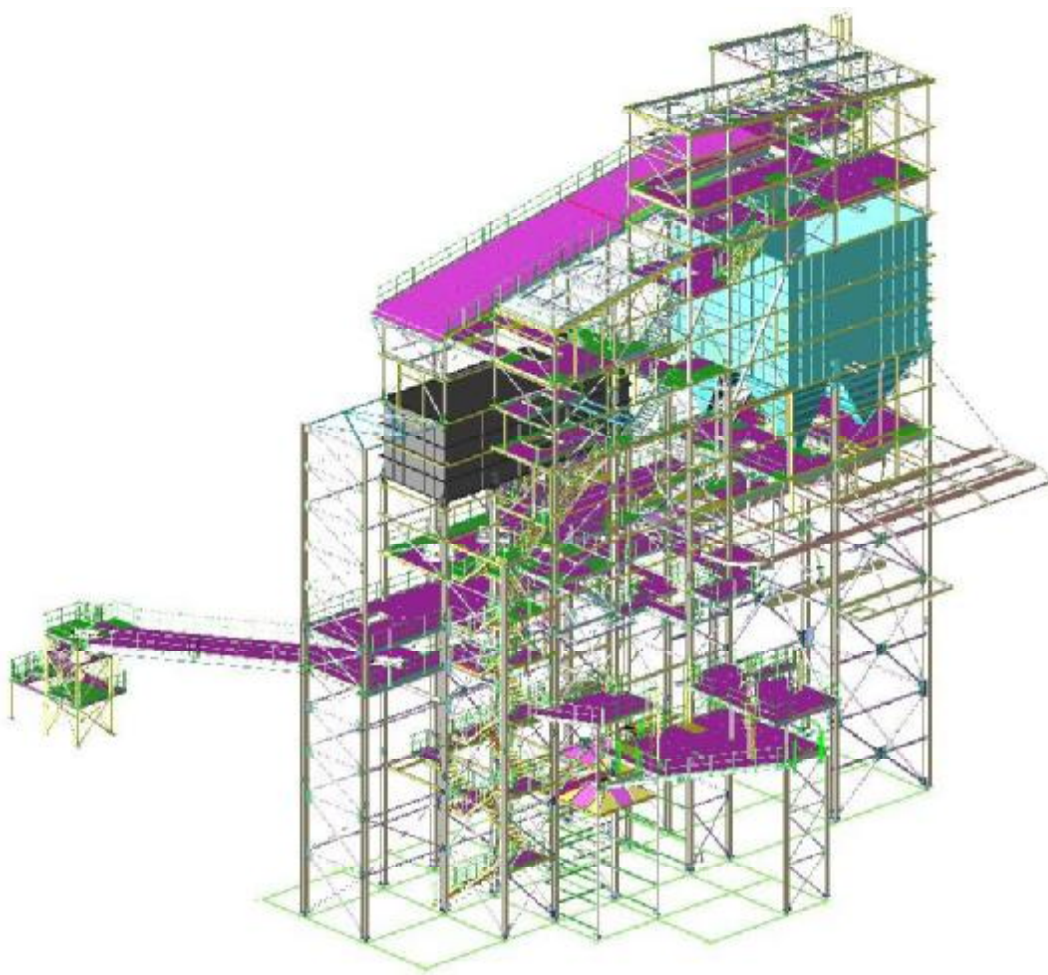
ARCHITECTONIC STUDIES - COMPLEX PROJECTION WORKS  
STATICS AND DYNAMICS OF BUILDINGS  
WORKSHOP DOCUMENTATION OF PREFABRICATED AND STEEL CONSTRUCTIONS





## HESCON Ltd. - DESIGN AND STATICS OFFICE

ARCHITECTONIC STUDIES - COMPLEX PROJECTION WORKS  
STATICS AND DYNAMICS OF BUILDINGS  
WORKSHOP DOCUMENTATION OF PREFABRICATED AND STEEL CONSTRUCTIONS



Yours Faithfully,

Ing. Erik Hrnčiar  
director of company  
Authorized construction engineer